



tis Torquay International School

Information 2013

www.tisenglish.co.uk | Tel: +44 (0)1803 29 55 76 | study@tisenglish.co.uk

Meet the Team 2013



Judith Hands Owner/Director
judith@tisenglish.co.uk

TIS was founded in 1972, and I joined in 1977 – a long time ago maybe but I'm proud of that and of the development of this school where our team have always put the needs of our students first.

Over the last 40 years we have taught English to some 30,000 people of all age groups and from more than 60 countries. We are now welcoming the third generation of students from some families. Even the parents, now in their forties and fifties, come back with their teenagers for more courses. In fact, more than half of our students are over 30 and around a quarter are between 45 and 75! Our Business English client companies have, in many cases, continued to use our services for up to thirty years.

Our accommodation is a highlight: the three categories of homestay, Club TIS Hotel and our apartments are increasingly popular and you need to book early, especially for the summer season.

Finally, our students are at the heart of everything we do and our overall aim never changes – to offer top quality courses and accommodation and a fast, efficient and friendly service to each individual.



Dean Jones
General Manager
Dean.Jones@tisenglish.co.uk

Dean joined us in 2012 bringing years of experience in both the management and academic fields of English Language teaching. Having worked in Japan and China he has some skill in both languages and a love of all things oriental.



Dean Rollings
Director of Studies
Dean@tisenglish.co.uk

Dean joined us in 2007 and has a lot of teaching experience in the UK and abroad. He also speaks Polish having formerly been a Director of Studies in Poland and chose Torquay as the best place in England for his family to live in.



Lynne Kingdom
Administration Manager
Lynne@tisenglish.co.uk

Lynne joined TIS in 1981 and is our 'font of all knowledge'! Whatever your question, Lynne will find the answer. She's an expert on the area, doctors, restaurants, attractions, travel and visas. She helps students with many questions and her great sense of humour helps a lot.



John-Peter (JP) Fellows
Social Manager
JP@tisenglish.co.uk

TIS Social Manager and universal uncle is known to all as JP. He joined TIS as a DELTA qualified teacher in 1982 and now organises a great Social Programme with a wide range of activities and excursions to suit all ages and tastes. JP loves fishing, nature and making people happy.



Jan Brady
Accommodation & Welfare Manager
Jan@tisenglish.co.uk

Jan was first a host family with TIS in 1980 and then joined the team in 1987. She is responsible for bookings and allocating students as well as recruiting and inspecting our host families. Jan is in close contact with her hosts and carefully monitors all student feedback.



Michael and Gillian
Business Course Leaders
Michael-Gillian@tisenglish.co.uk

Michael (joined 1996) and Gillian (joined 1998) are our Business Course Leaders and are responsible for our team of Business English teachers. They are involved in programme development and supervise the individual progress of each Business English student.



Sassie Tickle
Sales & Marketing
Sassie@tisenglish.co.uk

Sassie is a Devon girl and joined TIS in 2011 and is our Marketing Assistant. Her work includes our newsletters and our website plus Facebook and Twitter and helps with Student Services. She speaks fluent Spanish and after graduation went to work in a language school in Peru.



Janet Kane
Financial Manager
Janet@tisenglish.co.uk

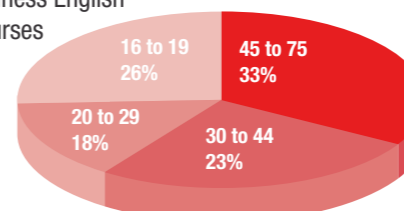
Janet is our Financial Manager and does the invoicing of all bookings. She joined TIS in 2007 and has an organised mind and a good head for numbers. Any invoice or payment queries should be sent to Janet and she will be happy to help you.

Factfile 2013

Key facts

- Accreditations & Memberships: British Council, IALC, English UK, Business English UK, English UK South West and TEN - The English Network
- Mature Students: 56% are aged over 30 and 23% are aged 45 to 75
- Multinational Classes: a truly international atmosphere with 40+ different nationalities
- Satisfied Clients: more than 60 students returned to TIS in 2012 for their 2nd or 3rd time and one student returned for his 10th year running
- Good Transport Connections: Exeter Airport EXT - 45 minutes, Bristol Airport BRS - 90 minutes, Heathrow Airport LHR - 3.5 hours and London - 2.5 hours
- General English, Business English and Examination Courses

TIS age groups



Why Choose TIS

- 40 years of experience in English Language teaching
- Quality of courses and accommodation constantly monitored by all staff
- Small group classes - General English average class size 6 to 9
- Courses for all English levels from beginner to advanced. Business English students lunch with a teacher and have 2 evening activities included
- Experts in English for Business & Professional Purposes
- High exam pass rates and intensive exam preparation for Cambridge FCE, CAE & CPE; IELTS & TOEIC
- Relaxed, safe and enjoyable learning environment
- Diverse and flexible social programme to suit all ages
- Our staff - qualified, experienced and loyal: 50% have been here 10-15 years and 20% for over 20 years
- A full-time Social Manager organises 4-5 activities weekly plus weekend excursions
- Personal service is at our core and every student is treated as an individual

Accommodation

- Carefully selected 3 Star, 4 Star and 5 Star Homestay accommodation all within walking distance of the school
- 12 en-suite rooms at Club TIS Hotel opposite the school – popular with mature and business clients
- School managed apartments and flat-share very close to school

Torquay

A vibrant and traditional English seaside resort, the English Riviera is the birthplace of Agatha Christie and has more attractions than any other seaside resort in the UK! Built on seven hills the beauty of Torquay has to be seen to be believed and is known as the Queen of the English Riviera.

Torquay has:

- Short walking distances around town / homestays all within walking distance
- Purple Flag status for safe and enjoyable nightlife, lots of summer cafés, clubs, theatres, Michelin star restaurants and a casino
- Population - 70,000 (Torbay - 125,000)
- Low cost of living, high quality of life, and low crime rate
- An excellent location on a beautiful coastline, near to National Parks and historic cities, Blue Flag beaches plus lots of attractions and sports facilities
- Warmest climate in the UK

TIS Numbers

- Established in 1972
- Small classes: 1, 4, 8, 10 (12 in high season)
- 20 classrooms
- Open 12 months per year including religious and public holidays (closed for 2 weeks over Christmas and New Year)
- School capacity 145

School Facilities

The school building is a traditional Victorian villa set in spacious gardens and woodlands. Freshly decorated in red and white, some of our classrooms have sea-views. It is 5 minutes on foot from the town centre and only 15 minutes from the harbour and marina.

Facilities on our small campus include:

- 20 classrooms with white tables and soft-seat chairs
- Whiteboards, audio-visual equipment and laptops
- Student lounge with Plasma screen TV and refreshments
- Computer suite with free internet
- Bookshop and lending library
- Self-access study room
- Volley-Ball court (plus table tennis, darts, snooker in low season)
- Sun terrace and BBQ
- Free wireless internet throughout school and Club TIS
- 24-hour emergency support
- Travel assistance and welfare service
- Club TIS Hotel with Club TIS lunch Café

Business and Professional English Courses 2013

- 1-4 Week Courses
- Lunch with Teacher
- Personal Programme
- Mature Clients
- Small Classes

Classes as usual on all public holidays inc. Easter



TIS Business & Professional English courses are designed to meet the needs of personnel from international companies and organisations and the emphasis is on:

- Developing vocabulary and grammar with particular reference to business and professional situations
- Building confidence and fluency in communicative business language
- Interaction with international colleagues and customers in business and social surroundings
- Expanding cultural awareness of different business cultures

The teaching staff are chosen not just for their skill as teachers but for their understanding and knowledge of international business. They are 'in tune' with the needs of their clients and the flexibility of the courses enables us to personalise the programme to suit individual needs.

All course candidates are individually monitored and receive a Placement Test and Needs Analysis in advance of the course to help us plan their stay. In addition to their course they are invited to join a teacher for lunch every weekday and two evening activities of a social nature but designed to increase communication are also included. Weekends are free for personal projects or participation in our excursion programme. Full details can be found at available at www.tisenglish.co.uk/business-professional-courses/

Course Title	Course Description	Max Class Size	Tuition Hours (60 minutes) per week Monday to Friday	Level (CEFR)	Low Season	High Season
					07 Jan - 28 Jun & 02 Sep - 20 Dec	01 Jul - 30 Aug
Intensive Business English	All day group course	4	30 hours + 5 optional lunches with a teacher	Pre-Int to Advanced (B1 to C1)	£760 per week	£830 per week
Business & General English	General English am Business English pm	am 10 pm 4	30 hours = 15 hours am 15 hours pm + optional lunches	Pre-Int to Proficiency (B1 to C1)	£505 per week	£556 per week
Combination Business English	1-1 tuition am tailor made to suit individual needs Business English pm	am 1 pm 4	30 hours = 15 hours am 15 hours pm + optional lunches	Pre-Int to Proficiency (B1 to C2)	£1350 per week	£1400 per week
Combination English for International Banking & Finance	1-1 tuition am focus on Banking & Finance English Business English pm	am 1 pm 4	30 hours = 15 hours am 15 hours pm + optional lunches	Intermediate to Proficiency (B2 to C2)	£1500 per week	£1575 per week
Personal Intensive	1-1 tuition tailor made to suit individual needs	1	15, 20, 25 or 30 hours + optional lunches	Beginner to Proficiency (A1 to C2)	£65 per hour	£75 per hour
Intensive English Plus	General English am	4	15 hours + optional lunches	Pre-Int to Advanced (B1 to C1)	£425 per week	£450 per week
Intensive English Plus 5	General English am + pm private lessons	4 + 1	15 hours + 5 hours + optional lunches	Pre-Int to Advanced (B1 to C1)	£650 per week	£775 per week
Intensive English Plus Options	General English am + Wednesday & Thursday pm Options	4 + 10	15 hours + 5 hours + optional lunches	Pre-Int to Advanced (B1 to C1)	£470 per week	£495 per week
Business English Afternoons	Business English	4	15 hours + optional lunches	Pre-Int to Advanced (B1 to C1)	£314 per week	£376 per week

Registration Fee payable per course or once only for a combination of courses:

*OPTIONS CLASSES : a range of elective topics are offered each week based on demand. Classes take place on Wednesday and Thursday afternoons and include: Communication Skills, Exam Preparation incl. IELTS, TOEIC, Business language plus Language through Song and British & American Literature in summer. *Optional Lunches: Join a teacher at lunchtime (cost of lunch is not included). *Private lessons take place mostly on Monday and Friday afternoons. Full details on all these courses at www.tisenglish.co.uk/general-english-courses/

Two evening activities are included each week. Weekends are free but an optional activity & excursion programme is offered to all. All text materials and daily refreshments are provided.

AGE RANGE

Minimum Age 23 In reality most participants are aged between 30 and 55

Levels: A Placement Test and Needs Analysis is sent to all Business English participants before their course to help us assess levels, needs and strengths and weaknesses. The results are essential in helping us with our advance course planning.

Please note: classes of maximum 4 per class are arranged according to level. It is unusual that someone does not fit in to one of the levels but should this happen, participants on any of the 30 hour courses will receive 1-1 tuition for 24 hours per week and participants on a 15 hour group course will receive 12 hour 1-1 tuition.

General English Courses 2013



- Small-Medium Classes
- Multinational Groups
- Relaxed Atmosphere
- Experienced Teachers
- Variety of Topics

Classes as usual on all public holidays inc. Easter

General Courses start every Monday and are available for 2- 50 weeks. Intensive English Plus courses are available for one week or longer.

Everyone is tested on arrival in order to be placed at the most suitable level and the first day also includes a thorough induction and guided tour of Torquay.

Tuition materials and end-of-course certificates are included and private lessons can be booked to supplement studies.

An optional and varied Social Programme is organised to suit all age groups in the school. There will be some free activities but excursions involving transport and entrance fees are charged

"Our General English courses are planned to help you achieve fluency, accuracy and confidence but, above all, to help you communicate effectively."

Course Title	Course Description	Max Class Size	Tuition Hours (60 minutes) per week Monday to Friday	Timetable	level (CEFR)	Low Season Price Per Week				High Season Price Per Week			
						07 Jan - 28 Jun & 02 Sep - 20 Dec				01 Jul - 30 Aug			
						2-5 Wks	6-9 Wks	10-24 Wks	25 Wks+	2-5 Wks	6-9 Wks	10-24 Wks	25 Wks+
General English	Focus on grammar, vocab, listening, reading, confidence & fluency	10 / 12	18 hours	am + Tue pm	Elementary to Advanced (A2 to C2)	£220	£215	£200	£185	£275	£250	£200	£185
General English Plus Options	As General English plus elective topics	10 / 12	23 hours = 18 hours + 5 hours	am + Tue, Wed & Thu pm	Elementary to Advanced (A2 to C2)	£265	£250	£240	£230	£310	£295	£240	£230
Business & General English	General English am + Business English mini-group pm	10 / 12+ 4	30 hours = 15 hours + 15 hours	All Day	Elementary to Advanced (A2 to C2)	£505				£556			
Private Lessons	1-1 tuition in addition to a group course	1	1-10 hours	pm	Elementary to Advanced (A2 to C2)	£45 per hour				£65 per hour			
Intensive English Plus	General English am	4	15 hours + optional lunches	am	Pre-Int to Advanced (B1 to C1)	£425				£450			
Intensive English Plus 5	General English am + 5 private lessons pm	4 + 1	15 hours + 5 hours + optional lunches	am + pm	Pre-Int to Advanced (B1 to C1)	£650				£775			
Intensive English Plus Options	General English am + Wed & Thur pm Options	4 + 10 / 12	15 hours + 5 hours + optional lunches	am + Wed & Thu pm	Pre-Int to Advanced (B1 to C1)	£470				£495			
Registration Fee payable per course or once only for a combination of courses:						£55				£55			

*OPTIONS CLASSES : a range of elective topics are offered each week based on demand. Classes take place on Wednesday and Thursday afternoons and include: Communication Skills, Exam Preparation incl. IELTS, TOEIC, Business language plus Language through Song and British and American Literature in summer. *Private lessons take place mostly on Monday and Friday afternoons and are not necessarily every day. *Optional Lunches: Join a teacher at lunchtime (cost of lunch is not included). *12 in high season Full details on all these courses at www.tisenglish.co.uk/general-english-courses/

Weekends are free but an optional activity & excursion programme is offered to all. All text materials and end-of course certificate are included.

AGE RANGE

Although the minimum age is 16 on General English and 23 on Intensive English Plus, in reality at least half our students are aged 30 to 70

Levels: We cannot accept complete beginners on any of our group courses. If you are uncertain of your English level, contact us and we can give you a simple test.

Age groups: The minimum age on all General English courses above is 16 - however, more than 50% of TIS students are over 30 and 25% are over 45.

Options: each week you are provided with a range of options based on demand, elective lessons are on Wednesday and Thursday afternoon and include: Communication Skills, Exam Preparation, Business language, Language through Song and, British and American Literature.

Examination Courses 2013

- 3-10 Week Courses
- High Success Rates
- Experienced Teachers
- Test Centre
- Small Classes



Classes as usual on all public holidays inc. Easter

Cambridge Examination Courses - FCE, CAE & CPE

Course Title	Timetable	Max Class Size	Tuition Hours (60 minutes) per week Monday to Friday	Course length	Level (CEFR)	Low Season 07 Jan - 28 Jun & 02 Sep - 20 Dec	High Season 01 Jul - 30 Aug
Cambridge Examination Course - FCE, CAE & CPE	Mornings + Wed & Thu Afternoon	8	23 hours	3-5 Weeks	Intermediate to Proficiency (B1 to C1)	£265 per week	n/a
Cambridge Examination Course - FCE, CAE & CPE	Mornings + Wed & Thu Afternoon	8	23 hours	6-10 Weeks	Intermediate to Proficiency (B1 to C1)	£250 per week	n/a
Summer FCE / CAE Preparation Course	Mornings + Wed & Thu Afternoon	8	23 hours	5 Weeks	Intermediate to Advanced (B1 to C1)	n/a	£1550.00 for 5 weeks
Examination Entrance Fee (estimated prices)						£116	£120
Registration Fee payable per course or once only for a combination of courses:						£55	£55

Starting dates for the full 10 week syllabus: 7 January (CPE - 9 weeks only), 1 April, and 23 September, although it is possible to join on later dates for 3 weeks or more.

- No new students may join the examination classes for the final three weeks..
- Levels B1 to C2 accepted depending on the exam – before arrival, students are given a level placement test. If there are only one or two students for a particular exam class:

1. Students join a General English Class for 18 hours per week – Monday to Friday mornings plus Tuesday afternoon.
2. Five hours on Wednesday and Thursday afternoon is devoted to 1:1 or 2:1 exam preparation tuition. Monday and Friday afternoons are self-study with exam practice.

Full details on all these courses at www.tisenglish.co.uk/examination-preparation-courses/

Weekends are free but an optional activity & excursion programme is offered to all.

All text materials and end-of course certificate are included.

AGE RANGE
Minimum Age 16
In reality most participants are aged between 20 and 40

Examination Courses 2013

IELTS is accepted by thousands of organisations in over 135 countries including most universities, government departments and multi-national companies. The IELTS Global Recognition System can tell you exactly which organisations accept IELTS and the scores required. IELTS preparation classes run all year. Classes take place every morning from Monday to Friday inclusive and Tuesday, Wednesday and Thursday afternoons. Monday and Friday afternoons are free for private study and examination practice using past papers. Many of our clients only need the preparation toward the IELTS exam for between 4 – 6 weeks and those who stay longer often also study General English with a variety of Options classes to improve their overall level of English.

Course Title	Course Description	Max Class Size	Tuition Hours (60 minutes) per week Monday to Friday	Course length	Level (CEFR)	Low Season 07 Jan - 28 Jun & 02 Sep - 20 Dec	High Season 01 Jul - 30 Aug
IELTS Preparation Course	General English am & Tues pm IELTS Wed & Thu pm	10 / 12	23 hours = 18 hours + 5 hours	2-5 Weeks	Pre-Int to Advanced (B1 to C1)	£265 per week	£310 per week
IELTS Preparation Course	General English am & Tues pm IELTS Wed & Thu pm	10 / 12	23 hours = 18 hours + 5 hours	6-9 Weeks	Pre-Int to Advanced (B1 to C1)	£250 per week	£295 per week
Examination Entrance Fee (estimated prices)						£130	£140
Registration Fee payable per course or once only for a combination of courses:						£55	£55

* 12 in high season
There are IELTS test dates at TIS and other nearby language centres every month, see table at bottom of page
Full details on all these courses at www.tisenglish.co.uk/examination-preparation-courses/

Weekends are free but an optional activity & excursion programme is offered to all.
All text materials and end-of course certificate are included.

AGE RANGE
Minimum Age 16
In reality most participants are aged between 20 and 40

TOEIC preparation classes take place regularly but please check with us first for availability. TOEIC can be taken either as an option if there are enough students or with some additional private lessons. Test dates here at Torquay International School can take place on any week as we are an authorised TOEIC test centre.

Cambridge Business English Certificates - BEC Preliminary, Vantage & BEC Higher Preparation classes are available on request as part of General English Plus Options or private lessons.

Recommended entry Levels for Exam courses:

BEC: Preliminary B1. FCE and BEC Vantage: Good B1 to B2 (B2 needed for short courses such as 3/5 weeks). CAE and BEC Higher: C1 (Good C1 needed for short courses such as 3/5 weeks). CPE: C2. We are happy to give further advice on levels and can send you a Diagnostic Test to help assess your level.

Afternoon Private lessons	These are available in addition to exam preparation classes and can be booked in advance or at the school. Suitable for all examination students.	£45 per hour	£65 per hour
---------------------------	---	--------------	--------------

FCE/CAE/CPE Course Dates													FCE/CAE/CPE Course Dates													
January				February				March					April				May				June					
Mo	7	14	21	28	4	11	18	25	4	11	18	25	1	8	15	22	29	6	13	20	27	3	10	17	24	
Tu	1	8	15	22	29	5	12	19	26	5	12	19	26	2	9	16	23	30	7	14	21	28	4	11	18	25
We	2	9	16	23	30	6	13	20	27	6	13	20	27	3	10	17	24	1	8	15	22	39	5	12	19	26
Th	3	10	17	24	31	7	14	21	28	7	14	21	28	4	11	18	25	2	9	16	23	30	6	13	20	27
Fr	4	11	18	25	1	8	15	22	1	8	15	22	29	5	12	19	26	3	10	17	24	31	7	14	21	28
Sa	5	12	19	26	2	9	16	23	2	9	16	23	30	6	13	20	27	4	11	18	25	1	8	15	22	29
Su	6	13	20	27	3	10	17	24	3	10	17	24	31	7	14	21	28	5	12	19	26	2	9	16	23	30
Wk	1	2	3	4	5	6	7	8	9	10	11	12	13	14	15	16	17	18	19	20	21	22	23	24	25	26

FCE/CAE Course Dates													FCE/CAE/CPE Course Dates													
July				August				September					October				November				December					
1	8	15	22	29	5	12	19	26	2	9	16	23	30	7	14	21	28	4	11	18	25	2	9	16	23	30
2	9	16	23	30	6	13	20	27	3	10	17	24	1	8	15	22	29	5	12	19	26	3	10	17	24	31
3	10	17	24	31	7	14	21	28	4	11	18	25	2	9	16	23	30	6	13	20	27	4	11	18	25	1
4	11	18	25	1	8	15	22	29	5	12	19	26	3	10	17	24	31	7	14	21	28	5	12	19	26	2
5	12	19	26	2	9	16	23	30	6	13	20	27	4	11	18	25	1	8	15	22	29	6	13	20	27	3
6	13	20	27	3	10	17	24	31	7	14	21	28	5	12	19	26	2	9	16	23	30	7	14	21	28	4
7	14	21	28	4	11	18	25	1	8	15	22	29	6	13	20	27	3	10	17	24	1	8	15	22	29	5
27	28	29	30	31	32	33	34	35	36	37	38	39	40	41	42	43	44	45	46	47	48	49	50	51	52	1

FCE
 CAE
 CPE
 IELTS
 IELTS & CPE
 Course joining dates
 Duration of course

IELTS Courses are available all year round



We offer three different categories of homestay. They are all very carefully chosen and regularly monitored by us and by the feedback from our students. The families are friendly and will take care of their guests. They have clean, comfortable homes and offer a good standard of living. It is very important to us that students are as happy in the homestay as they are in the school.

- 3 Star** Homestays are carefully chosen. They are friendly families with comfortable homes and give good value for money. We have no hesitation in recommending them and feedback from our students is excellent.
- 4 Star** Homestays also offer bedrooms with exclusive use of a bathroom.
- 5 Star** Homestays offer luxury accommodation and private bathroom facilities.

Staying with a family can really help students adapt to speaking all the time in English.

Each bedroom will have a study table (or there will be a quiet room to study in). Breakfast and an evening meal every day are included plus a light lunch at weekends. Hosts are happy to do some light laundry each week. All our homestays are within reasonable walking distance of the school and the town centre but those who don't want to walk will find there is a good bus service and journey times to the school and town centre are around 5-15 minutes.

We never put two students of the same nationality in the same family unless two people travelling together ask us to place them together.

Please let us have arrival times as soon as you know them because everyone is met by their homestay host on arrival in Torquay at the bus or railway station.

All accommodation fees are charged pro-rata according to the number of nights Arrivals & departures can be on Saturday or Sunday	Low Season 5 Jan - 29 Jun & 31 Aug - 21 Dec	High Season 29 Jun to 31 Aug
Accommodation Arrangement fee	£40.00	£40.00
3 Star Homestay per week	£119.00	£133.00
4 Star Homestay (with private bathroom) per week	£182.00	£196.00
5 Star Homestay (with private bathroom) per week	£231.00	£252.00

Second person sharing a double/twin room pays 25% less on prices shown above (only available for couples or students booking together)



MEET JAN! All TIS Homestay accommodation is selected, inspected and carefully monitored to ensure a high standard at all times by Jan Brady who has been the TIS Accommodation Manager since 1988. Before that Jan was a host family herself!



Please note: we need your arrival information as soon as possible so your hosts can arrange to meet you. Contact us on study@tisenglish.co.uk



CLUB *tis* HOTEL

Opposite the school is Club TIS, our own bed and breakfast guest house and an ideal choice for adult students. The Club has 12 comfortable bedrooms; all with en-suite shower or bathroom and some with sea-views across the bay. The Club TIS staff take great care to maintain the friendly atmosphere in this charming little "international" hotel.

The Club TIS Study Room is open in the evenings for homework or a game of cards or just to check email or browse the internet on the guest computer. Wireless Internet is free of charge and provided throughout the hotel.

A south-facing terrace leads out from the café dining room with views across the bay and the English Riviera. A perfect place for breakfast on a sunny morning or for relaxing in the evenings. Some of our guests even do their homework out there!

It's only a short walk to the town centre and another 10-15 minutes to the lively harbour-side with lots of pubs, restaurants and cafés along the way. Club TIS is in a perfect location for easy living.

The Club TIS Café is open for lunches on weekdays from April to October (and sometimes longer) and offers delicious home-cooking, salads and cakes. Guests can also order an evening meal or salad. A little guest kitchen with microwaves and fridges is available so guests can prepare a simple supper. There is also an Honesty Bar with wines, beers and bottled water.

A substantial and nutritious buffet breakfast is provided and includes:

- A choice of cereals, yoghurt and fruit
- Tea, coffee, fruit juice
- Cheese, ham and boiled eggs
- Toast, bread, honey, jam and marmalade



All accommodation fees are charged pro-rata according to the number of nights Arrivals & departures can be on Saturday or Sunday	Low Season 5 Jan - 29 Jun & 31 Aug - 21 Dec	High Season 29 Jun to 31 Aug
Accommodation Arrangement fee (includes Torquay meeting service)	£40.00	£40.00
Superior Room per person per night	£40.00	£45.00
Standard Room per person per night	£35.00	£40.00
Double room supplement for second person per night	£23.00	£23.00

Long stay rates at Club TIS are negotiable depending on the length of stay and time of year. Contact study@tisenglish.co.uk

Torquay Arrival Meeting Service: Club TIS is not staffed 24 hours per day and therefore we meet our clients on arrival at the bus or railway station. It is essential for us to have the arrival information at least 7 days in advance.

Arrival by car: Ask us for directions at study@tisenglish.co.uk and let us have estimated arrival times. Club TIS has a private car park for guests.

Self-catering and Flat-share Apartments 2013



Cedar Cottage

Two attractive, self-contained flats both with two bedrooms & two bathrooms and free wireless internet. 3 minutes walk from TIS and 5 mins from the town centre. Suitable for couples or small families or as a flat-share for individuals (in the low season). Each flat can accommodate up to four people.

Cedar Cottage is located in a very quiet area just 150 metres from TIS so it is also close to the town centre, shops, supermarkets and the night life. Both flats are fully furnished and each has a modern kitchen with a washing machine, gas hob, electric oven, microwave and fridge. TV and DVD plus radio/CD player are also included. There are two bedrooms and two bathrooms.

Students booking on a flat-share basis will have their own bedroom and bathroom. The kitchen/dining area and sitting room is shared with the occupant of the other bedroom. All bedrooms have locking doors. The flats can also be rented for sole occupancy by a couple or a small family. Bedding and towels are provided. All flats have double-glazing and gas central heating in all rooms. Gas, water, electricity, wireless internet, bed linen and towels are included. Very suitable for exam students.



Rosa Apartment

Executive Apartment with a sea view and free wireless internet. 15 minutes walk from TIS and 5 minutes from the town centre.

Rosa is a very spacious, fully equipped executive apartment with one large double bedroom, en-suite bath/shower-room, a large lounge with TV and DVD plus radio/CD player, spacious conservatory (winter garden), a large modern kitchen (oven, microwave, washing machine), garden terrace and private parking. It is very well equipped, overlooking the harbour and close to shops, super market and restaurants.

Rosa has double-glazing and gas central heating in all rooms. Gas, water, electricity and wireless internet are included.

The bedroom at Rosa has a double bed, a single bed and another bed for a smaller child and can comfortably accommodate up to two adults and two children.

Rosa is 15 minutes on foot from TIS and five minutes from the town Centre. Book early - Rosa has a lot of repeat clients.



Arrivals & departures can be on Saturday or Sunday	Low Season 5 Jan - 29 Jun & 31 Aug- 21 Dec	High Season 29 Jun to 31 Aug
Accommodation Arrangement fee (includes Torquay meeting service)	£40.00	£40.00
Cedar Cottage Flat-Share - single room/private bathroom flat-share per week	£160.00	Whole flat only in summer
Cedar Cottage whole flat for 2 per week (supplement £60 per week extra persons/children)	£270.00	£470.00
Rosa for 1 person only per week	£225.00	£400.00
Rosa for 2 persons per week (supplement of £60 per week extra persons/children)	£400.00	£600.00

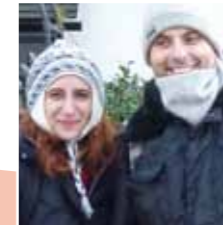
Student Testimonials

'Our students have high expectations of their stay with us. In addition to learning English they want to experience our British way of life, meet other students, and enjoy a social programme either of their own devising or arranged by us. As a team we recognise this and aim to help each individual make the best possible use of their time with us and have the best language learning experience imaginable. We think the following testimonials collected over the last year prove our success.'

Dean Jones
General Manager

Our host family was very, very nice. We'll miss them a lot! The social programme was great! Thank you JP! We'll miss you!

Damian C, Julieta A
Argentina



'My host mother was brilliant and showed me all the places we had to visit. She made me feel at home. There was a very nice atmosphere, and every single person seemed to be important.'

Laura B, Germany



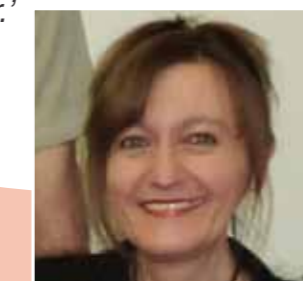
'The perfect mix of people from different cultures and ages.'

Roberto C, Italy



'I think that the school is a very good one, well organized and professional. It gives the opportunity to meet people coming from all over the world and this is wonderful. The lessons were very intensive and lively. I'll come back again next summer.'

Enrica S, Italy



Enrica first came 20 years ago and summer 2012 was her 4th visit!

'I enjoyed myself so much that I can't say when or what was the very best moment!'

Raquel S, Spain



'Excellent course, teachers are very patient with students ...the school is like a family, they can help you with anything.'

Eric H, Taiwan



'I have been to TIS every year since 2002, because each time I come I improve my English and I feel comfortable and happy here. I always stay with the same host family and we have a great friendship. I wanted to learn English because I love to travel, since I improved my English I have the confidence to travel in Europe, America and Australia.'

Abdullah Al L, Kuwait



'I like it here because I meet many people of my age from different countries. I have time for myself, to study and enjoy. My accommodation at Club TIS Hotel is lovely, peaceful and close by so there is no stress.'

Rene C, Switzerland



Social Programmes 2013



We have an exciting and diverse social programme lined up for students of all ages, run by our Social Manager JP.

Some say this is one of the best social programmes in the world. Below are some examples of our weekly activities:



Afternoons

- Boat trip to Brixham
- Take the steam train to Dartmouth
- JP's mystery mini bus tour
- Fishing from the beach or at sea
- Guided tour of Torquay
- Paignton Zoo
- The old Market town of Totnes
- Berry Pomeroy Castle



Evenings

- Barbeque & Volleyball party
- International food night
- Folk singing with Adrian & Mike
- Local pub trip
- American Bowling
- Quiz night at our local pub



The dramatic Cornish Coast

Visit Boscastle and Tintagel or The Eden Project, and walk some of the stunning Coast Path. Famous for its quaint villages and dramatically rugged coastline., Cornwall has inspired many writers including John Betjeman and Rosamunde Pilcher. It's the home of the legends of King Arthur, Camelot and the Knights of the Round Table.



The Great Dartmoor Walk

A day out walking with famous Dartmoor postman and poet Nick Wotton. You may even visit the spot where Sherlock Holmes met the Hound of the Baskervilles!



Stonehenge

The mysterious and beautiful prehistoric monument thought to be over 4,000 years old!

Bath

An all day excursion to this Roman city & Spa town, famous for its architecture and its original Roman Baths.



Exeter & Topsham

An all day excursion along the Devon Coast to the Cathedral City of Exeter and also to the little riverside Port of Topsham famous for its wild bird life.

South Devon Information 2013

The South West of England – the favourite holiday destination of the British!

Where beautiful countryside meets dramatic coastline and where international students are met with a warm welcome and real English family life. There is something for everyone, including some of the most famous tourist attractions in the country, vibrant towns, historical cities, ancient ruins and National Parks.

Nature...

For nature lovers the South West is home to the National Parks of Dartmoor, Exmoor and Bodmin Moor. It is also famous for its beautiful coastline and world class beaches with the opportunity for all kinds of water sports. We have a wealth of tourist attractions on our doorstep including the Eden Project, the National Marine Aquarium and Paignton Zoo.

History....

The coastline of the South West peninsula has a rich and fascinating history of pirates, smugglers and shipwrecks. There are four UNESCO World Heritage Sites: the most famous of these sites are Stonehenge and Bath, a beautiful city full of treasures including the world famous Roman Baths. All of these are on our excursion programme as well as the cathedral city of Exeter and the legendary King Arthur's Castle in Tintagel.

Culture...

The highlights of South West culture are the open air Minack Theatre, perched on the Cornish cliffs near Lands End, The Tate Gallery in St Ives and the Theatre Royal in Plymouth. Cornwall and Devon have inspired many famous authors including renowned romantic novelists Rosamunde Pilcher and Daphne du Maurier.

Our region is said to have the best quality of life anywhere in England and living costs are much cheaper than in London and other cities. We are well connected to the rest of the country by good transport links and a weekend or even day trip to London by rail is easy, but once you arrive in the South West you probably won't want to leave!

Torquay

Torquay, situated on the English Riviera, is a traditional seaside town popular with tourists from home and abroad. It is a great choice for students, with the highest density of attractions of any resort in the UK and a vibrant nightlife, there is always something to do here! Torquay is also an attractive destination due to its short walking distances, traditional English atmosphere, quality of life and low crime rates.

A World Class Holiday Resort...

Torquay is considered the most beautiful seaside resort in the UK. It covers 35km of stunning South Devon coastline and boasts the highest concentration of Blue Flag beaches in the UK. On top of this, the warm climate, palm trees and forested hills give our Bay a Mediterranean flavour and thanks to its dramatic geology and tourism potential, the English Riviera has been designated a UNESCO Global Geopark.

Always Something to Do...

Torquay has a safe and enjoyable nightlife, including summer cafés, clubs, theatres, bowling, a Michelin Star restaurant as well as a casino and yacht marina. It has been awarded a Purple flag for being one of the safest and most enjoyable places in the UK for a night out. There are countless tourist attractions including: the prehistoric caves, home to Britain's first humans; Bygones, a museum with life replicas taking you back to Torquay 100 years ago, and; Paignton Zoo, one of the top environmental parks in Britain.



Famous Visitors...

Torquay was Queen Victoria's favourite town and has been a popular tourist resort since the beginning of the 19th Century. The world-famous crime writer Agatha Christie was born in Torquay and lived locally for many years. Charles Darwin finished *On the Origin of Species* whilst staying in Torquay and Oscar Wilde, Sir Arthur Conan Doyle and Rudyard Kipling also wrote some books here. Even Napoleon Bonaparte visited – he was held on a prison ship in Torbay and upon viewing his surroundings he claimed 'What a lovely country!'



TRAVELLING TO THE UK



By Air

Try to book flights which arrive in the morning & depart late afternoon/early evening if you use London Airports.

Recommended Airports:

LONDON HEATHROW AIRPORT is 3 hours by taxi transfer (single journey £210 max). National Express Buses run almost every 2 hours from LHR Central Bus Station directly to Torquay (journey time approx. 4 hours, £60 return max).

EXETER AIRPORT is 45 minutes by taxi transfer (single journey £40 max). Direct flights or fly via Amsterdam, Duesseldorf or Paris.

BRISTOL AIRPORT is 90 minutes by taxi transfer (single journey £95 max), train and coach (approx. £35 return).



By Sea

Brittany Ferries to Plymouth from Roscoff or Santander. Plymouth to Torquay is 60 minutes by car or train. Driving times from South and South East seaports are approx: Portsmouth 3 hrs, Weymouth 2 hrs, Poole 2 hrs, Southampton 3 hrs, Dover/Folkestone & connection for Channel Tunnel 5 to 6 hrs / Harwich 6 to 7 hrs.

Try to avoid:

LONDON GATWICK AIRPORT around 5 hours 30 minutes by bus

STANSTED AIRPORT: 7 to 8 hours by bus

LUTON AIRPORT 6 hours by bus

SOUTHAMPTON / BOURNEMOUTH AIRPORTS are not recommended unless you are hiring a car and/or booking a private transfer.

Visit www.tisenglish.co.uk/how-to-get-here for flights info to Exeter and Bristol and for the latest National Express timetable.



By Eurostar

From Paris, Brussels or Lille. Transfer by taxi or underground from St. Pancras to London Paddington Station.

- We strongly recommend that tickets and seat reservations are booked in advance, especially in June, July and August.

Advance reservations can be made through the TIS office lynne@tisenglish.co.uk, subject to £12 booking fee.

- Clients with an open return ticket should reserve their return journey as soon as possible at the TIS Office.
- From London Heathrow you can expect to pay approximately £30 for a single journey and £55 for a return.
- Airport Meet & Greet available - ask lynne@tisenglish.co.uk

TRAVELLING TO TORQUAY



By Coach

From LHR, LGW, Bristol and other airports to Torquay.

- The National Express have several services, see www.nationalexpress.com for coach times, prices or to book in advance directly through their website by credit / debit card. You can also download the timetable on our website.

Condensed National Express Coach Timetable, visit www.nationalexpress.com for detailed timetable

Valid to March 2013 - [updates at www.tisenglish.co.uk/downloads](http://www.tisenglish.co.uk/downloads) - any changes will be minimal

London Victoria - Gatwick - Stansted - Heathrow - Torquay

Daily Service Bus No.	501	501	501	501	501	501
London Victoria	07.45	10.30	12.30	14.30	16.30	19.00
LGW South Terminal*	06.50	09.20	11.35	13.05	15.35	17.40
Stansted Airport*	06.05	09.10	11.10	13.10	15.10	17.30
LHR Central Bus Station	08.40	11.25	13.20	15.20	17.25a	19.50
Torquay Bus Station	13.30	16.20c	17.40	19.50	21.35a	23.59

Torquay - Heathrow - Gatwick - Stansted - London Victoria

Daily Service Bus No.	404	501	501	501	501	501	501
Torquay Bus Station	00.15	05.35b	07.10b	09.35	11.35	13.45	16.50
LHR Central Bus Station*	05.30	09.55	11.50	14.20	16.15	18.50	21.35
LGW **South Terminal	07.20	12.05	13.50	16.05	18.05	20.40	23.55
Stansted Airport*	08.25	13.00	15.00	17.00	19.00	21.00	23.35
London Victoria	06.20	10.55	12.50	15.20	17.15	19.50	22.20

*Change at Heathrow. **Arrives 5 or 10 minutes earlier at Gatwick North. **a** - service operates 15 minutes later Monday to Friday (except bank holidays).

b - service operates 15 minutes earlier Monday to Friday (except bank holidays). **c** - arrives 15 minutes earlier from early July to early September

This timetable is correct until end March 2013 - there may be some small changes after that.



By Train

London Heathrow to Torquay: Heathrow Express to London Paddington (leaves every 15 minutes and takes 15 mins) for trains every 1-2 hours to Torquay (you may have to change at Newton Abbot - 5 miles from Torquay). If you book 3-6 weeks ahead it may be much cheaper. Bristol to Torquay by train is a good option if you arrive in Bristol in the morning or early afternoon. Journey time 2 hours 30 minutes, approx £40 return.

Ask us

Lynne our Administration Manager knows all that there is to know about travel within the UK. She can advise you and book tickets for you, just email lynne@tisenglish.co.uk with your full flight details. Subject to £12 booking fee.

Getting to your accommodation

You must tell your accommodation provider your arrival details well in advance to ensure that someone is available to meet you. If you are staying in a homestay, Club TIS Hotel or one of our apartments then you will be met at the bus or railway station on arrival. If you come by taxi transfer you will be taken directly to your accommodation.

www.nationalexpress.com
www.heathrowairport.com
www.stanstedexpress.com
www.stanstedairport.com
www.nationalrail.co.uk
www.eurostar.com

www.exeter-airport.co.uk
www.heathrowexpress.com
www.gatwickexpress.com
www.bristolairport.co.uk
www.brittany-ferries.com
www.firstgreatwestern.co.uk

We will always do our best to meet your needs and help you achieve your study goals and provide you with the services advertised in our publicity material and on our website. Full and up-to-date details of all our courses, accommodation and other services are published at www.tisenglish.co.uk

Your Booking: You can enrol at www.tisenglish.co.uk/how-to-book-how-to-pay/ or on our enrolment form. It is essential that you give us all the information we ask for and it is important that you tell us if you have a medical condition, allergies or other particular needs on booking. It is especially important to tell us if you have any serious difficulties with hearing, sight or mobility.

Beginners: We cannot accept complete beginners on any of our group courses. If you are uncertain of your English level, contact us and we can give you a simple test.

Paying Us: When you make your enrolment we ask you to send us the registration fee and the accommodation booking fee. Receipt of this means we can go ahead and make all the arrangements for your course. If you require a visa support letter, you will need to pay your full tuition fees once your enrolment has been confirmed.

We need to receive the balance of your payment 28 days before the start date of your course or immediately if you want your course to start sooner than this. You can pay by bank transfer, credit or debit card and you must pay all bank charges and costs.

Our Bank: HSBC plc, 14 Fore Street, St. Marychurch, Torquay, Devon, TQ1 4ND, UK. Account Name: Torquay International School Ltd. Swift Code: MIDLGB22. IBAN: GB83MIDL40444371136534.

Paying by Credit Card: We accept everything except American Express. There is an administration charge of 2.5% on top of the payment you make. You are able to pay securely through our website and your card details will be destroyed after payment.

Prices: All prices in our pricelist are valid throughout 2013 and tuition fees for 2014 are charged at the 2013 rates if booked before 1st November 2013. It is extremely unlikely that there will be any changes to our prices but this could happen if there are changes to government regulations or taxation laws. However, if you have already paid for your course and accommodation, no supplements will be charged.

Insurance: We strongly recommend that you travel with adequate insurance to cover expenses in case of emergency and also fees and costs in case of cancellation or curtailment.

Cancelling or Changing Your Course or Accommodation before Arrival: All changes have to be in writing. If you are cancelling because your visa has been refused, we will refund all fees except administration costs and any courier delivery charges, but you must produce the visa refusal notification. If you are cancelling for another reason, the money refunded depends upon how much notice you give us:

- 28 days or more before your arrival date - full refund less registration fee and accommodation placement fee.
- 27 to 14 days before your arrival date - full refund less registration fee, accommodation placement fee, one week tuition fee and one week accommodation fee.
- 13 days to mid-day on the Friday before your arrival date - full refund less registration fee, accommodation placement fee, first four weeks tuition fee and first two weeks accommodation fee.
- Cancellations made after Friday mid-day before the weekend of your arrival or non-arrivals will not receive any refund on tuition fees, registration fee or accommodation placement fee. All host family fees will be refunded except for the first two weeks. If you cancel the Club TIS Hotel, Cedar Cottage or Rosa, we do not give any refund unless we are able to re-let during the time of your booking.

Changing Your Course or Accommodation after Arrival: All changes have to be in writing: you are able to upgrade if possible, but we do not give a refund if you cancel, curtail your stay or change to a cheaper course. If you cancel your host family, we refund everything except the next two full weeks. If you cancel the Club TIS Hotel, Cedar Cottage or Rosa, we do not give any refund unless we are able to re-let during the time of your booking.

Complaints: If you have a problem whilst you are in the school, let us know immediately so we can help you. The complaints procedure is detailed in your Student Handbook. We want you to enjoy your time with us and will work hard to make this happen. However, no refunds can be given after you have completed your stay.

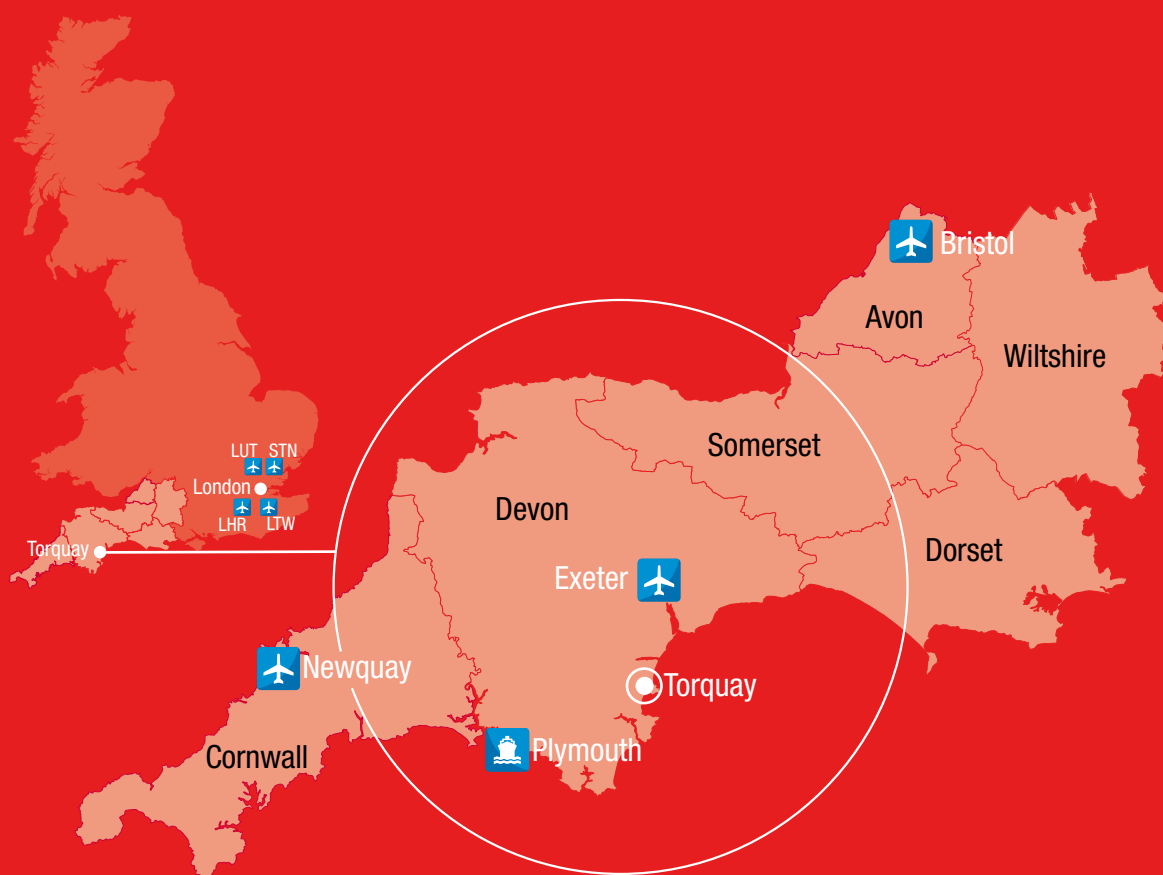
When We Might Change your Course: Although it is extremely rare, we may cancel or offer you a different course if we do not have enough students at your level. If you are on a 30 hour Business English course, we would give you 1-1 tuition for 24 hours each week instead of the group lessons, or if you are studying a 15-hour course, we would give 1-1 tuition for 12 hours per week.

Please Remember: For your own benefit and the benefit of your fellow students, you are expected to speak English at all times and behave respectfully to other students and staff.

When We are Open: All classes take place on weekdays and the school is open and from 08.30 to 17.30 daily. Unless you have made special arrangements for a week-end course, the school is closed at weekends and also each year for two weeks over the Christmas and New Year holiday. Details are available at www.tisenglish.co.uk. Classes take place as usual on all other public, religious or bank holidays including Easter.

Photography: Photographs or video which are taken while you are here are used for promotional reasons. If you do not wish us to use these images, please tell us.

tis Torquay International School



www.tisenglish.co.uk



study@tisenglish.co.uk



facebook.com/torquayinternationalschool



twitter.com/tis_english



+44 (0)1803 29 55 76



+44 (0)1803 29 90 62



15 St Marychurch Road, Torquay, Devon,
TQ1 3HY, England



tisenglish.co.uk/faqs



tisenglish.co.uk/about-the-school/latest-news



tisenglish.co.uk/downloads



tisenglish.co.uk/how-to-get-here



Emergency Cellphone +44 78 81 71 0395

(overnight/weekend emergencies)

The emergency phone is held by one of us when the school is closed. If you don't get an answer first time then keep trying or send a text as we may not be able to answer immediately.

